

CHARGE

LIQUID PLANT FOOD



TYPICAL ANALYSIS

% W/V N:P:K 11:19:6

HIGH PHOSPHORUS FERTILISER WITH HUMIC ACID

Nitrogen (N)	11.36%	Phosphorus (P)	19.54%	Potassium (K)	5.89%
Zinc (Zn)	0.07%	Iron (Fe)	0.14%		

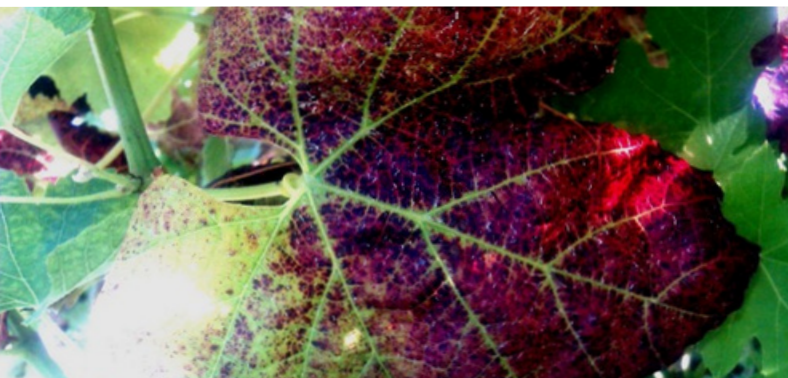
KEY FACTS

Charge derives a high rate of phosphorus, which is the key nutrient, necessary for root development, cell division and growth. Phosphorus is needed for photosynthesis, sugar and starch formation, in energy transfer and the movement of carbohydrates within the plant. In some pome and stone fruit it produces firmer, denser fruit which are less susceptible to storage disorders.

Phosphorus is not always available from the soil when the crop requires it. Charge is formulated and has Humic Acid for immediate uptake overcoming such problems resulting in higher yields and improved quality.

Charge is suitable for a variety of crops including horticulture, cereal, row crops, broadacre and pastures.

- High Phosphorus content which is ideal for application where phosphorus deficiency occurs.
- Formation for immediate efficient absorption.
- Contains Nitrogen (N), Potassium (K), Iron (Fe), and Zinc (Zn) with Humic Acid.
- Versatile – can be used as a foliar, soil applied or as a starter with seeds and transplants.
- Can be applied by ground or aerial equipment.



Before



After

CROP	RATES L/HA	CRITICAL COMMENTS
BROADACRE CROPS Cotton, Peanuts, Wheat, Barley, Sorghum, Canola etc.	2 TO 6	Apply as a foliar spray to supplement nutritional requirements of the crop. Alternatively apply to the soil at planting.
VEGETABLE CROPS	2 TO 6	
PASTURES	4 TO 6	

GENERAL INSTRUCTIONS

- Charge is designed as a foliar spray for cotton, vegetables, pastures and other crops, which require supplemental Phosphorus. It may also be used as a soil applied product.
- Charge contains Phosphorus in amounts that could be excessive for some crops. For further advice contact Growth Agriculture on Freecall 1800 440 438.

COMPATIBILITY

Charge mixes well with most spray chemicals, but ALWAYS TEST FOR COMPATIBILITY FIRST.

APPLICATION

When applying by ground sprayers, use with a minimum of 50Lt of water per Ha.

When used in aerial application use at least 20Lt of water per Ha.

STORAGE AND DISPOSAL

Store in the closed original container in a cool, well-ventilated area. DO NOT store for prolonged periods in direct sunlight. DO NOT store material that has been mixed with water – it will not keep.

Triple or preferable pressure rinse containers before disposal. Add rinsings to the spray tank. DO NOT dispose of undiluted chemicals on site. If recycling replace cap and return containers to recycler or designated collection point. If not recycling, break, crush, or puncture and bury empty containers in a local authority landfill. If not available bury the containers below 500 mm in a disposal pit specifically marked and set up for this purpose clear of waterways, desirable vegetable and tree roots. Empty containers should not be burnt.

SAFETY DIRECTIONS

Wash hands after use. Avoid contact with skin and eyes. DO NOT SWALLOW.

FIRST AID

If poisoning occurs contact a Doctor or Poisons Information Centre (13 11 26).